

Installation & Maintenance Instructions

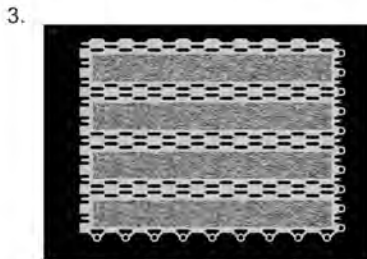
Material Calculations

- a) Divide matwell width by 305mm and round up
- b) Divide traffic direction by 228mm and round up
- c) Subtract one row in each direction for Helix Z1 tiles

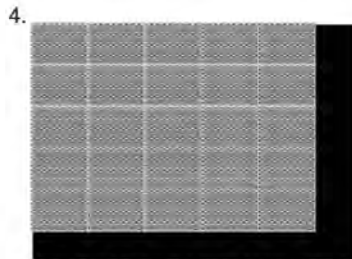
Example - Matwell 1760mm x 1290mm
 a) = 6 Tiles
 b) = 6 Tiles total = 36 Tiles
 c) = 11 Z1 Tiles and 25 Z2 Tiles

Installation

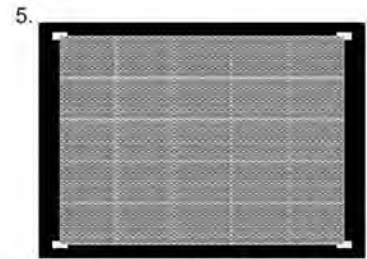
1. Assemble aluminium matwell frame using pre-mitred frame and corner locks. Drill frame, place into position, shim frame to correct level taking into account the floor finish, plug and screw to base using fixings provided. Check to ensure frame dimensions are accurate before proceeding.
2. Using a self-levelling latex screed, or other suitable material, form the matwell base level with the top of the base flange section. Particular attention should be given to ensure your matwell base is flat and undulation free.



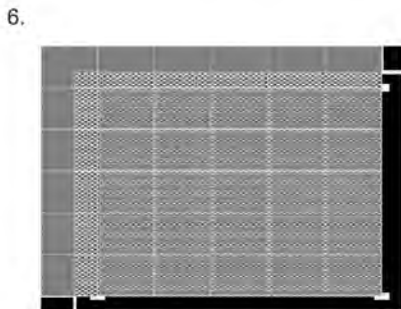
Place one Helix Z2 tile in the top left hand side corner of the matwell, with connectors aligned as shown above.



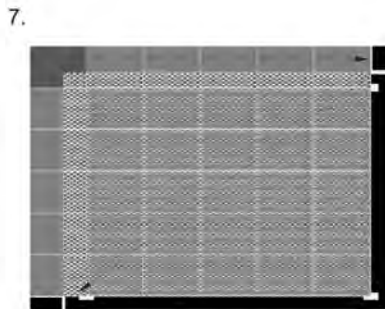
Join the Helix Z2 tiles together and fill the matwell with the maximum number of whole tiles. 1.



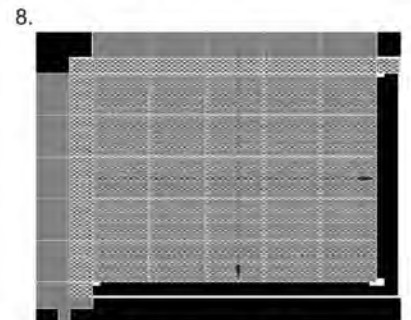
Move the assembled area of Helix tiles to the centre of the matwell and place locating clips in all corners and at 2m intervals along any edges greater than 3m.



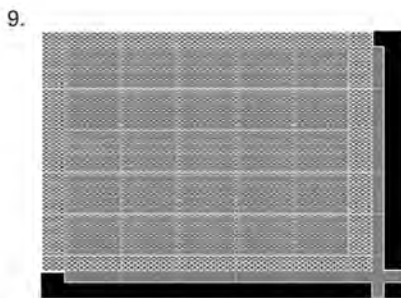
Join Helix Z1 to the Helix Z2 tiles along the top and left hand side edge of the matwell and trim to fit matwell.



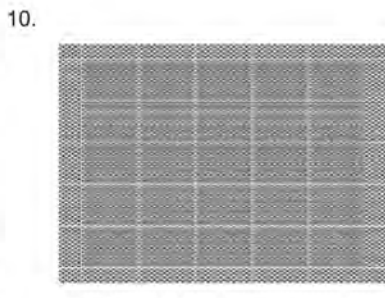
Place one Helix Z2 tile in the top left hand side corner of the matwell, with connectors aligned as shown above.



Move the remaining parts of Helix Z1 tiles to the opposite sides of the matwell.



Trim the remaining Helix Z1 tiles to fit the matwell.



Mat installation is now complete.

11. Surface mounted mats on tiled or smooth surfaces should use surface aluminium ramped frame mitred at corners and screwed to floor. Your mat can then be installed as in 3-10 above.

C/S Pedisystems®
 Entrance Matting Systems
 V1.0
 Installation Instructions

All dimensions in millimetres unless otherwise stated.
 Do not scale from the drawing. If in doubt ask



Construction Specialties™

Construction Specialties (UK) Ltd
 1010 Westcott Venture Park
 Westcott, Aylesbury
 Buckinghamshire HP18 0XB
 England

Tel: +44 (0)1296 652800
 Fax: +44 (0)1296 652888

e-mail: info@c-sgroup.co.uk
 Internet: www.c-sgroup.co.uk

